



## **SAINTS WEEKLY**

**THE Place  
for Christian Academy  
News & Updates**

FEBRUARY 14, 2025  
Vol. 25



**PARENTS -  
TIME IS RUNNING OUT!**

**To be eligible for extra  
financial aid - see important  
information at the bottom of  
this issue.**

## **ATHLETICS**

**CONGRATULATIONS!!  
BOYS VARSITY AND JUNIOR  
VARSITY  
SCISA 3A REGION III  
CHAMPIONS!!!!**

**Next game for Boys Varsity is the State Playoff 2nd Round  
(1st round bye) at 3:30 on Tuesday, February 18, at the  
Sumter Civic Center**

# BASKETBALL

Junior Varsity Boys  
SCISA 3A Region III Tournament Champions!



Varsity Boys

SCISA 3A Region III Tournament Champions!



**CONGRATS!!!**



**CAITLIN FRITZ**

**SCISA ALL  
REGION  
III-AAA**

**GET THE FULL  
SCHEDULE**

**DOWNLOAD THE  
SAINTS ATHLETICS  
APP**



**Christian Academy  
Athletics**

Sports

[Open](#)



**LOOK FOR THIS APP**

## **SAINTS ATHLETIC FOUNDATION**

**FEATURED SPONSORS**



**THANK YOU  
GOLD SPONSORS**

Daniel Colbert Family



**SHORELINE  
FLOORING**

**ARMOUR SPONSOR**

**Thanks to  
SHORELINE FLOORING**

for supporting our student-athletes  
and coaches!







# HIGH SCHOOL STEM PROJECTS!





### 7th grade annual field trip to Florida!

Our students had a great opportunity to swim with the manatees in Crystal River, visit the Museum of Science and Industry and experience an overnight educational program at Busch Gardens theme park.



FLORIDA  
FLORIDA  
FLORIDA  
FLORIDA

## FINE ARTS

**SAVE THESE DATES!!!**

**APRIL 4 @ 7PM**

**APRIL 5 @ 3PM & 7PM**

The Middle & High School  
Theatre Arts  
Programs Present



OVER 60 STUDENTS PERFORMING

Lower, Middle & High School Performers

AT OCEAN VIEW BAPTIST CHURCH  
7300 N Kings Hwy - Myrtle Beach



[LINK TO ORDER MUSICAL  
TSHIRT](#)

GET YOUR EXCLUSIVE MUSICAL TSHIRT

NOTE: CAST MEMBERS WILL RECEIVE A FREE TSHIRT

ORDER DEADLINE IS FEBRUARY 20

PLEASE PROOF FOR APPROVAL  
SCREENPRINT · EMBROIDERY · DIGITAL PRINTING



DESIGN · BANNERS · VEHICLE WRAPS · SIGNS

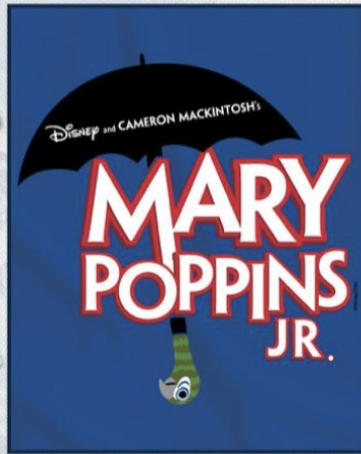
SCREEN PRINTING

\*PROOFS ARE A DIGITAL REPRESENTATION OF ART\*  
There may be slight variations on the actual printed product.  
\*ALL ARTWORK IS © NATIVE SONS UNLESS OTHERWISE NOTED \*

CUSTOMER: CHRISTIAN ACADEMY  
SALES REP: JL DESIGN: MARY POPPINS JR.  
DESIGNER: DC COMP DATE: 2/3/25

37890

v3



FRONT  
11" w x 11.35" h

BACK  
11" w x 13.65" h

GARMENIS  
TAHITI BLUE



**Friends of the Fine Arts  
Sponsors**  
provide the funding that drives  
our fine arts programs.

**THANK YOU TO  
EUROPRO  
OF MYRTLE BEACH**  
Cal & Tamala Baker

**FAITH WITH FEET**  
Demonstrating Our Faith Through Action  
**FEBRUARY IS HEART FOR MISSIONS MONTH**



# MENU

Chick-fil-A  
Breakfast  
Biscuit  
\$5

Bottle of  
Water  
\$1

FRIDAYS IN  
FEBRUARY & MARCH

# BREAKFAST FOR MISSIONS

TO SUPPORT THE JR/SR  
MISSIONS TRIP TO THE  
DOMINICAN REPUBLIC  
IN MAY

**PLACE YOUR ORDER**

Order forms will be  
emailed every  
Monday

**Served at 7:30am**  
**every Friday in the**  
**cafeteria**

Students are to be finished  
before class starts



FEBRUARY IS

Heart for  
Missions Month

Supporting:  
Brie-Ella's Bibles





The 4th grade Faith with Feet project is collecting soda can tabs to donate to the Ronald McDonald house! The tabs are recycled with the income helping to fund programs like in-hospital family rooms and Ronald McDonald Houses. **Please help 4th grade by dropping your tabs off at the front desk!**

(tabs only please; no cans or plastic bottle lids)

**\*Now until February 21st**



Yes you can!

## THANK YOU VOLUNTEERS!!

Christian Academy wants to express our deepest appreciation for the incredible ways our volunteers support the school. Whether you serve with the PTA, assist in the arts, athletics, prayer groups, or as chaperones, coaches, or PEP Club leaders, your contributions are truly invaluable.

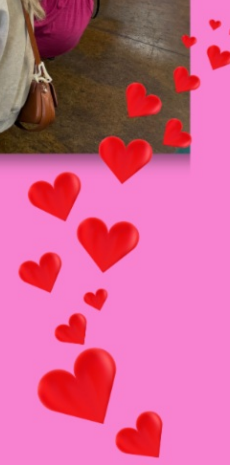
Your dedication, time, and energy make a lasting impact in every grade. We are so grateful for your spirit of partnership, which helps make Christian Academy such a special place.



Thank you for everything you do – we couldn't do it without you!

Volunteer  
Breakfast!!

THANK  
YOU!



# Pink Rocks!

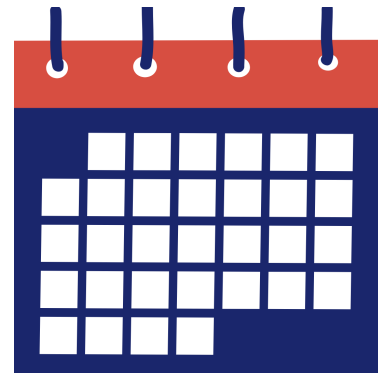


[CLICK HERE TO RENT THE  
ROCK](#)

## SCHOOL CALENDAR

**Long Weekend Ahead  
School Closed**

**2/17-18. NO SCHOOL for students (Staff returns 2/18)**  
**2/18 Varsity Boys State Playoff 2nd Round - Time TBD**



# PRESIDENTS DAY



**SCHOOL CLOSED**  
**FEBRUARY**  
**17TH AND 18TH**

**STUDENTS RETURN  
BACK TO SCHOOL  
ON FEBRUARY 19TH**

## FOUNDATIONS



**Exemplifying the CA core value of Christian Leadership is 2011 graduate Justin Miller, Executive Master in Health Administration, receiving the 2024 MUSC, Medical College of South Carolina, Alumni Emerging Leader Award.**



## South Carolina Education Trust Fund Program (ETFP) Eligibility

Legislation has recently passed the SC Senate and is now to the House to revamp the ETFP. What does this mean for CA Parents?

- See the chart below - if you fall within 300% of the poverty guidelines you can apply for this program NOW. If legislation passes and you have not applied, you could miss out on one of the 10,000 scholarships allowed for in the current program.
- Contact the House Representatives and express your support of this program to allow for more parents to send their child to schools like Christian Academy. We've included a list of names and contacts below.

[LINK TO APPLICATION PAGE](#)



South Carolina Department of Education

### Education Scholarship Trust Fund Program

Thank you for your interest in participating in the [Education Scholarship Trust Fund \(ESTF\) Program](#). The ESTF program provides \$6,000 scholarships to qualifying South Carolina students. The South Carolina Department of Education administers the ESTF and has contracted with ClassWallet for programmatic support and to manage the distribution of scholarship funds to participating families. Learn more and get started below!

**The 2025-2026 student application is open NOW! To be eligible, your application must be completed and submitted by March 15th, 2025.**

[Apply Now](#)

#### IMPORTANT

- Scholarships are awarded to students meeting the qualifications on a first-come, first-served basis. Notifications will be sent out in March.
- For help connecting with approved service providers or for additional support using your ESTF funds, visit [Outbridge](#).
- Families: [Watch a recorded webinar about the program](#).

## EDUCATION SCHOLARSHIP TRUST PROGRAM INCOME THRESHOLDS @ 300%

# In Household	Annual Income
1	\$46,950
2	\$63,450
3	\$79,950
4	\$96,450
5	\$112,950
6+	refer to HHS chart (link below)

[LINK TO HHS CHART](#)

### HOUSE OF REPRESENTATIVE CONTACTS

NOTE: The email links below are not active, you will need to paste them into your own browser

Case Brittain

[CaseBrittain@schouse.gov](mailto:CaseBrittain@schouse.gov)

Jeff Johnson

[jeffjohnson@schouse.gov](mailto:jeffjohnson@schouse.gov)

Heather Crawford

[HeatherCrawford@schouse.gov](mailto:HeatherCrawford@schouse.gov)

William Bailey

[WilliamBailey@schouse.gov](mailto:WilliamBailey@schouse.gov)

Tim McGinnis

[TimMcGinnis@schouse.gov](mailto:TimMcGinnis@schouse.gov)

Lee Hewitt

[LeeHewitt@schouse.gov](mailto:LeeHewitt@schouse.gov)

Kevin Hardee

[KevinHardee@schouse.gov](mailto:KevinHardee@schouse.gov)

Carla Schuessler

[CarlaSchuessler@schouse.gov](mailto:CarlaSchuessler@schouse.gov)

Val Guest

[ValGuest@schouse.gov](mailto:ValGuest@schouse.gov)

## AN IMPORTANT NOTE ABOUT OUR NEW FORMAT

Our new format allows you to unsubscribe at any time. **But PLEASE NOTE that unsubscribing may also take you off other important school email communications.** If you wish to be removed from the Saints Weekly updates but stay on other Christian Academy email notifications, please email us to update your preferences.

[CLICK HERE](#) to email us with your e-newsletter content preferences.

Christian Academy of Myrtle Beach | 291 Ronald McNair Boulevard | Myrtle Beach, SC 29579  
US

[Unsubscribe](#) | [Update Profile](#) | [Constant Contact Data Notice](#)



Try email marketing for free today!